

SOLaTM

ingenico
aWorldlinebrand

Ingenico Move/5000 Datasheet



Move/5000

The perfect business companion
to enable mobile businesses



- Enhanced customer engagement at the point of decision
- Sleek design for high-end environments
- Intuitive interface for best-in-class user experience
- Never disconnect via automatic network switching





Designed for both indoor and outdoor use, the Move/5000 is the perfect business companion for hospitality, retail and small merchants, creating a seamless mobile shopping experience.



• Fast introduction with Telium TETRA OS

The Telium TETRA OS integrates with existing payment methods to ensure a seamless introduction into a business' payment environment. Merchants also have greater control over the payment experience that they're offering customers by utilizing useful HTML5 applications.

• Alternative payment methods

From mobile wallets to traditional payments, Move/5000 has it all covered. The Move/5000 contains payment hardware such as NFC couponing, chip & PIN, swipe and sign, contactless and more to facilitate the processing of alternative payment methods – including those enabled by camera, like QR codes.

• Highest security

The Move/5000 is certified and fully compliant with the latest global and local PCI regulations. The Telium TETRA OS has been future-proofed with top-of-the-line cryptography software and Ingenico's world-class peer-to-peer encryption technology to keep data safe.

• Maximized network availability

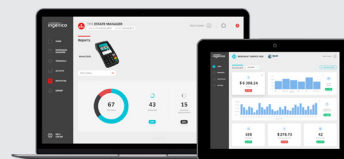
Even on the go, those using the Move/5000 terminal will have strong connections to the internet. That's because this terminal utilizes a wide range of wireless connectivity options and automatic network switching between 4G/LTE, Dual SIM, Bluetooth and Wi-Fi – all fully optimized so that connection will always be viable.

• Optimal user-experience

The Move/5000 is dynamic by design and offers and intuitive user interface is powerful multimedia capabilities and a large 3.5-inch color touchscreen that helps create an optimized experience for customers. Its new and ultra-responsive rubber keypad improves PIN entry for customers.

• Compatible with Ingenico's suite of services

Keeping the solutions connected, the Move/5000 works with Ingenico's supporting service platforms, meaning merchants will have access to business services such as estate management. Software updates and day-to-day support deliver a hassle-free experience for those using this innovative payment device.



The Move/5000 is supported by our Cloud Services

Processor	• Application & Crypto processor	• Cortex A5	✓
Memory	• Internal	• 512 MB Flash, 512 MB RAM	✓
	• External	• MicroSD up to 32GB	✓
OS		• Telium TETRA	✓
SIM		• 2 SIM	✓
SAM		• 2 SAM	✓
Card readers	• Magstripe	• ISO 1/2/3, 500K lifespan	✓
	• Smart card	• EMV Level 1, 500K lifespan	✓
	• NFC/Contactless	• EMV Level 1 compliant	✓
Data capture	• Positioning	• GPS tracking	Option
	• Camera (only available with 4G option)	• 5M pixels autofocus	Option
Display	• Color	• 3.5" backlit, HVGA (480x320 pixels)	✓
Touchscreen	• Capacitive		✓
Keypad		• 16 keys, raised marking, backlit	✓
Audio	• Speaker	• Mono	✓
	• Audio Jack	• Stereo	✓
Video	• Video accelerator	• H264 codec	✓

Thermal Printer	• Speed in lines/s	• up to 30 lines/s	✓
	• Paper roll cage	• 2 1/4" (58mm) width x 0" 40mm	✓
Terminal connectivity	• LAN	• WiFi and Bluetooth	Optional
	• Multicom	• 4G/LTE + WiFi + Bluetooth	Optional
Terminal connections	• USB	• Host & Slave	✓
	• Power Supply	• Dedicated power Jack	✓
Battery	• Li-ion	• 2900mAh	✓
Terminal size		• 6.6x3.1x2.2" (169x78x57 mm)	✓
Weight	• Terminal + Battery	• 11 oz (320 g)	✓
Environment	• Operating Temperature	• 14°F to 122°F (-10°C to +50°C)	✓
	• Storage Temperature	• -4°F to 131°F (-20°C to +55°C)	✓
	• Operating Humidity	• 85% non-condensing at 104°F (+40°C)	✓
Accessory	• Car Charger	• Charge-only	Option
	• Docking-station	• Modem	Option
		• Ethernet 10/100 Base T	Option
		• Bluetooth	Option
	• Stylus Kit		Option
Security		• PCI PTS 6.x and 5.x online & offline certified	✓



www.ingenico.com

ingenico

SOLa™